



Brockenhurst College



INTERNATIONAL PROSPECTUS

2024

WELCOME TO BROCKENHURST COLLEGE



Here at Brockenhurst College we welcome students from all over the world thanks to our broad international outlook, impressive record of academic success and picturesque location in the New Forest National Park.

Importantly, you can make new, long-lasting friendships and gain an authentic insight into British life by living with an English-speaking family.

Whatever programme you choose to study, we will work with you to ensure you enjoy an interesting, inspiring and meaningful learning experience, enabling you to build a positive platform for further success.

We hope you enjoy reading our prospectus and please contact our International team if you have any questions. We look forward to welcoming you as a student at Brockenhurst College in the near future.

Helen Odhams
Principal

As an international student you will have opportunities to enjoy all aspects of life at our unique institution. This includes benefiting from the expertise of our specialist teachers and academic support staff.

You will also benefit from our extensive range of wider learning activities, as well as support and guidance from our Professional Services staff, including careers advisors.



CONTENTS

International success 4

How we support you as an individual 6

Investing in your future 8

Teaching & Results 10

Enrichment and Students’ Union 11

Location..... 12

Brock Campus 14

Academic support 16

Elite Support programme 17

Aspire Academy 18

STEM Academy 20

Performing Arts & Music Academy..... 22

Sports Academy 24

Homestay accommodation 25

High School Experience and school courses

High School Experience 26

Spring, Summer and Winter School Courses... 28

Secondary courses

Pre-A Level Plus..... 31

A Level / A Level equivalent courses 32

Fast Track A Level..... 34

Vocational courses..... 36

University preparation courses

International Foundation Year in Business and Finance 40

International Foundation Year in Science and Engineering..... 42

Application process..... 44

Fees, scholarships and visas..... 45

Contact us 46



10



25



34

An overview of the British education system:

| Ages | Stages | Exams | |
|---------|-----------------------------|---|------------------|
| 3 – 5 | Pre-school | – | Primary |
| 5 – 7 | Key Stage 1 Year 1 – 2 | National Tests | |
| 7 – 11 | Key Stage 2 Year 3 – 6 | National Tests | |
| 11 – 14 | Key Stage 3 Year 7 – 9 | National Tests | Secondary |
| 14 – 16 | Key Stage 4 Year 10 – 11 | GCSEs Level 2 Qualifications Vocational Qualifications | |
| 16 – 18 | Key Stage 5 Year 12 – 13 | AS/A Levels Level 3 Qualifications Vocational Qualifications Foundation Year | |
| 18+ | Level 4 – 6 | Higher National Diploma Undergraduate Degrees | Higher Education |
| 21+ | Level 7 – 8 | Postgraduate Degrees Doctoral Degrees | |

INTERNATIONAL SUCCESS

Last year almost three quarters of our international students who progressed to university in the UK went to institutions ranked in the top 20[†]. Successful completion of our courses may enable you to study at one of our partner universities. These include the University of Reading, Kingston University London, Bournemouth University and the University of Southampton.

[†]Times Higher Education UK university rankings 2024.



“After completing a two-year A Level course I can say with certainty that Brockenhurst College is a superb choice for those who strive for excellence. Brock offers all the necessary facilities and learning equipment for students to achieve the best grades possible and to create a positive and friendly environment. With the outstanding work and dedication of my tutors I was able to achieve high grades in my subjects, which helped me secure a place to study Law at the University of Exeter.”

Balint Garamvolgyi from Hungary.
A Levels studied: Business, History, Law. GCSE Chinese.



“Attending Brockenhurst College has been a really wonderful experience for me. I got to choose my favourite subjects, which makes my everyday life at college filled with lessons that I’m interested in. I have improved my English in the best way possible, with help from all of my teachers, the International team, and friends that I have made along the way. Not only have the teachers been helpful, the International team at Brock has definitely made my college experience better. They arrange trips and activities for the international students, help us with any problems we might have, and they are super friendly. Studying at Brock has been a wonderful experience and definitely has given a lot of benefits for the future.”

Thea Ronningen from Norway.
A Levels studied: Fine Art, Sociology, Criminology, Chinese.



“I came to Brockenhurst College for a one-year exchange, but I really love the College, so I decided to stay for the second year. I can study subjects that I couldn’t in my country, so it is new for me. Even though it is difficult at first, the teachers and friends will support you. If I have some problems, the International team are always supportive and help me to find solutions. Living away from your country, family and friends is not easy, but since Brock is a big college with lots of international students, you can make friends from lots of different countries. Studying abroad is not only about studying – you can learn other important skills as well. The two years that I spent at Brock and with my amazing host family is definitely going to be the best memory in my life.”

Yura Nishioka from Japan. A Levels studied: Psychology, Sociology, Chinese.

We host students from all over the world:

- | | | | |
|-----------------------|------------------|---------------------|--------------------|
| Belgium | France | Mexico | Switzerland |
| Bolivia | Germany | Norway | Taiwan |
| Brazil | Hong Kong | Poland | Thailand |
| Chile | Hungary | Sierra Leone | Turkey |
| China | Italy | Slovakia | Vietnam |
| Colombia | Japan | South Africa | Zimbabwe |
| Czech Republic | Malaysia | South Korea | |



HOW WE SUPPORT YOU AS AN INDIVIDUAL



Paul Spanner
International Manager

"I'm passionate about Brock and about the beautiful New Forest, where we are lucky enough to live and work. I regularly travel overseas to meet with students, parents, education agents and schools to talk about the benefits of an education with us. My team and I genuinely care about each and every one of you, and the first-class support we provide has helped many international students into world-class universities."

Melissa Murphy
Senior International Officer

"My role is to recruit international students from around the world to study at Brock, carefully taking into consideration their future plans and progression opportunities. I spend time overseas meeting with students, parents and agents in different countries to further the College's vision for internationalisation. I look forward to seeing you around campus."

Susan Sun
Director of Brock China Office

"With more than 20 years of experience helping Chinese students study abroad, I am very passionate about recruiting students to study at Brock. As a leading state college in the UK, Brock has so many great resources to offer. I am also very pleased to be able to support the Chinese students on the Elite programme and guide them to use the College's resources, achieve their best and further their education at their dream university."

Catalina De La Vega
International Administration Officer

"I am originally from Colombia, and having lived in a few countries, I enjoy working within multicultural environments. I have been working with international students for over ten years, and having been an international student myself, I can relate to students who are pursuing Further Education away from home. That is why I have a real passion for helping you to have the best experience at Brock and in the UK."

Samantha Ettle
International Student Experience Officer

"I'm responsible for ensuring the welfare of our international students, as well as helping them have the best possible experience at Brock. Having lived overseas, I understand the challenges of life in a new country, but I also know it will leave you with lots of great memories. I will arrange your host family placement and will meet you in tutorials or the International office to help you with any problems. I also support our international Chinese students on the Elite Programme to achieve their potential."

Jo Buttle
International Administration and Accommodation Officer

"One of my key roles is to arrange Homestay placements and make sure our students have all the support and guidance they need while studying at Brock. I'm dedicated to making sure the student experience is a safe and happy one."

INVESTING IN YOUR FUTURE

Brock Hub

Brock Hub gives you the ideal environment to engage in independent study, helping you keep up with your work and hit your targets. The Hub contains several areas dedicated to collaborative group study and other areas dedicated to silent study. As well as featuring all the equipment and resources you need – both digital and non-digital – this facility is home to Professional Services staff, who are 100% committed to supporting you at college. These staff members include finance advisors, safeguarding and welfare workers, and a careers specialist. There is a learning resources shop too – providing quality products at competitive prices.

Why does it look like that?

By adopting a range of modern, outdoor-influenced design innovations, we have incorporated the latest research findings on improving productivity and supporting mental wellbeing. As a result, technology and nature sit side-by-side to nourish the senses. This mirrors the world's most productive office spaces, where workers feel stimulated, able, supported and content. With everything you need in one optimised setting, you will feel empowered to apply yourself in the spirit of academic endeavour and scholarly satisfaction.



**REFURBISHED
SCIENCE LABS**

**NEW COMPUTER
SUITES**

**UPGRADED WI-FI
ACROSS THE MAIN
CAMPUS**

**NEW COVERED
AREA FOR MEETING
FRIENDS**

**UPGRADED SOUND
STUDIO**

**3D PRINTER FOR
MARCHWOOD
STUDENTS**

**NEW
FOUNDATION AND
INDEPENDENCE HUB**

**SOLAR PANELS TO
GENERATE GREEN
ENERGY**



TEACHING & RESULTS

A UK education is recognised by many employers, universities and governments around the world as an indication of quality in a young person. Studying with us will give you the knowledge and skills on which you can build for success in the future, as well as an authentic British experience.

Excellent results

Our exam results are consistently good. In 2023 our overall international pass rate was 100%, with 80% of students achieving A*-C grades across all subjects. Detailed exam results for 2023 are available at www.brock.ac.uk/achievements

Secure a place at a top university

All our international students can progress to a top university. In 2023, 79% of international students who went to a UK university from Brockenhurst College gained places at top 20⁺ ranked universities, including: University of Bristol, The University of Manchester, University of Exeter, The University of Sheffield, University College London, Imperial College London, University of Southampton, Durham University and University of Liverpool.

[†]Times Higher Education UK university rankings 2024.

Partner universities

We have close links to University of Reading, which is home to the renowned Henley Business School. Other partners include Kingston University London, Bournemouth University and University of Southampton. Successful completion of some of our courses may enable you to progress directly to these institutions.

International students achieved...

100%

pass rate across all A Level subjects

61%

A*-B grades across all A Level subjects

80%

A*-C grades across all A Level subjects

55%

progression to Russell Group universities

What is the Russell Group?

The Russell Group is an internationally recognised association of 24 prestigious British public research universities, which are well known for their academic excellence and selective admissions. They include: University College London, Imperial College London, University of Nottingham and University of Southampton.

Quality information, advice and guidance

Here at Brock we are proud to hold TWO prestigious quality standards for the information, advice and guidance we provide to our students. This package of support empowers learners to make informed choices about their next steps after college. We have held the Matrix Quality Standard since 2004, and in 2022 we were very pleased to add the Quality in Careers Standard. Both these awards were achieved in full following a rigorous validation process that included continuous external assessments.

Quality assurance for Higher Education

We have been endorsed by the Quality Assurance Agency, which examines how well UK educational institutions maintain standards in Higher Education.

ENRICHMENTS

Enrichments strengthen your progression prospects by adding value to your learner profile and weight to your job and/or university applications. This is because employers and universities understand and value the wider skills and attributes college leavers have acquired through Enrichments.

OVER 35 ENRICHMENTS
Find out more at www.brock.ac.uk/enrichment

Your selected Enrichments will form part of your overarching Study Programme, giving you prime opportunities to pursue your interests and generate evidence of additional success. Although many Enrichments must be completed in person, others can be completed online at a time that suits you. You can select from our wide range of options, which contains something for everyone. For example, you can engage with our Brock2Kenya humanitarian project or learn a new language with Spanish for Backpackers.



SCAN FOR MORE INFORMATION



Our Students' Union (SU) is your chance to get involved with decision making at the College and bring about positive change.

The SU meets every week to champion the student voice. It organises and runs Student Parliaments and takes suggestions and queries forward to the College's Senior Management Team.

There are several SU committees, with remits including Education, Health and Welfare, Events and the

Environment. Executive SU members also initiate charitable fundraising drives and organise student events.

Every year the student community elects a new President and Vice President who work from an office on our main campus. Anyone is eligible to run for election to be President or Vice President.

You can select Students' Union as an Enrichment activity or engage with it independently. This pursuit will give you important evidence of success for both your CV and your UCAS application if you intend to apply to study at university.

LOCATION

The UK is well known around the world for its wealth of different communities, historical landmarks and world-class cultural events. Here in the South you can enjoy a mix of cosmopolitan cities, country villages, and the New Forest National Park with its ancient woodland and free-roaming ponies, donkeys and cattle.

Our 36-acre campus is on the coastal side of the New Forest, and is a friendly, safe and peaceful environment in which to learn. Brockenhurst village is a five-minute walk away and has a mainline train station, enabling you to travel to London in under two hours.

Fifteen minutes away by train is the Russell Group university city of Southampton, which is also one of the largest shopping destinations in the region. In the opposite direction is the famous seaside resort town of Bournemouth.

Travel and transport

Travelling to the College is easy thanks to excellent transport links. Importantly, we try to ensure all host families live close to public transport routes.

Southampton and Bournemouth both have international airports serving European destinations, plus cross-channel ferries run from Poole and Portsmouth.

1. Brockenhurst village



2. View from London Eye



3. Bournemouth beach



90 MINS
To London or Oxford by train

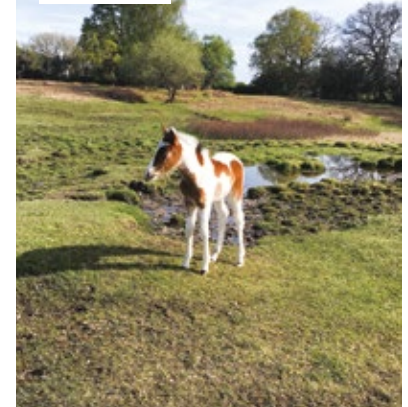
15 MINS
By train to Southampton and to the famous seaside town of Bournemouth

7 MINS
Walking time from train station to Brock

Brockenhurst train station



New Forest



4. University of Oxford



5. The Bargate, Southampton





BROCK CAMPUS

- 1 Thirty-six-acre campus in the New Forest National Park.
- 2 Twenty-seven acres of playing fields.
- 3 Over 300 student car parking spaces.
- 4 All-weather AstroTurf pitch for football and hockey.
- 5 Fully-equipped Sports Centre with Gym and Fitness Suite.
- 6 STEM Centre packed with the latest learning technology.
- 7 Engineering Workshops with industry-standard equipment.
- 8 Computing and IT labs with Cisco Systems input.
- 9 Photographic Studio including dark room.
- 10 Foundation and Independence Hub – new for Sept 2023.
- 11 Visual Arts Hub with separate areas for each specialism.
- 12 Industry-standard training kitchens and fine-dining restaurant.
- 13 International office.
- 14 Newly refurbished science laboratories set up for a range of experiments.
- 15 Brock Hub run by trained and experienced staff, featuring group study rooms and personal workspaces.
- 16 Specialised classrooms for English, humanities, modern languages and childcare courses.
- 17 Hard Brock Café open all day for food, drink and socialising.
- 18 Reflections Room for quiet contemplation and prayer.
- 19 Business and IT Suites.
- 20 Recording Studio with industry-standard hardware and software.
- 21 One-hundred seat Kemball Theatre available for all kinds of performances.
- 22 Highwood Nursery open to the college community and the public.

ACADEMIC SUPPORT

All our teachers are specialists in their subjects and many have professional experience in their subject fields. Each one has an in-depth knowledge of exam requirements and will work hard to inspire and motivate you so you can achieve your full potential.

International Tutorial programme

When you arrive, you will be given a full induction to help you settle. Regular international tutorials will be timetabled, giving you access to both academic and pastoral help and support.

English classes (ESOL)

Your timetable will include ESOL English classes to help support your UK learning experience. All top universities in the UK and overseas require a high level of English, which is why these classes can aid you in both the short and longer-term. We also offer specific exam preparation support qualifications such as IELTS and TOEFL.

Academic tutor

Your Academic tutor represents a friendly point of contact for academic and personal issues. He or she will provide you with information about events, your progression and will help you with your UCAS application if you plan to remain in the UK for further study. Each Academic tutor is focused on enabling you to reach your full potential.

University and careers guidance

There will be opportunities to visit universities and attend our Higher Education Fair on campus, which is attended by representatives of around 70 universities. You can also receive guidance about the process of applying to universities in the UK, including the universities of Oxford and Cambridge. In addition, you will have access to one-to-one careers advice as part of our Next Steps programme.

Student Services

Our Student Services team is on-hand to support all students. Team members will be happy to help with a range of topics, including: finance, health and wellbeing, learning difficulties and personal issues.



“Brock enabled me to focus on the subjects that matter to me. There is lots of support available to students from tutors and the international office, and the Brock Hub provides

helpful resources as well as an excellent environment to study. Studying at Brock is a great experience and made me decide to study further in the UK. I plan on applying to a Computer Science course at University College London.”

Oliver Soeser from Austria.
A Levels studied: Computer Science, Maths, Politics.

Parent Portal

We have a Parent Portal website that provides live details about all aspects of your Study Programme. Attendance and progress reports will be available and tutors may be contacted via the portal.



ELITE SUPPORT PROGRAMME

The Elite Support programme is a specialist added-value service that is designed to help ensure you achieve your potential. It is a total-care package that provides an extra layer of support and encouragement to enable you to adapt to the UK education system smoothly. It runs with both our Pre-A Level Plus courses and our full A Level courses. You may choose to participate in the programme for one or two years.

On our Elite Support programme you will benefit from the following:

- A specialist Elite Tutor to focus on your academic needs.
- Access to additional academic support outside normal college hours.
- Regular written feedback to your parents on your performance and attendance.
- A termly video link update for your parents.
- Frequent progress reviews and constant monitoring by your Elite Tutor.
- Educational visits and seminars to boost your university prospects.
- Extra pastoral care from dedicated officers.
- Access to our Aspire programme to help you aim for places at top universities.

Elite Support fees are payable in addition to the standard course fees.



AGE: 16+

COURSE DURATION:

Six months (alongside Pre-A Level Plus) or one – two years (alongside A Level)

START DATE:

September 2024 (alongside A Level)

January 2025 (alongside Pre-A Level Plus)

HOURS PER WEEK:

1.5 hours of tutorials plus out-of-hours support

TUITION FEES:

£4,500 alongside Pre-A Level Plus (six months)

£6,000 alongside A Level (one year)

“The Elite Support programme feels like a family. Whenever I have any problems, the tutors are always ready to help. The extra help makes me fully understand the College information and I joined the Duke of Edinburgh programme under the guidance of the tutors. I hope that with the support of the Elite Support programme I will achieve the best that I can.”

Anthony Sun from China. A Level and Elite Support programme.

ASPIRE ACADEMY

Our Aspire Academy is about nurturing your abilities and giving you the academic support you need to fulfil your potential. You will also benefit from university outreach initiatives, field trips, Enrichment opportunities, summer school options and intercollege competitions.

As an Aspire student you will work with your Aspire Tutor to develop a bespoke Study Programme that will enable you to grow into the learner and ultimately the professional you want to be. We will help you participate in supra-curricular activities to enhance your abilities and support you in your quest for success.

Naturally, it helps if you know what you are aiming to achieve; however, many learners prefer to keep their options open at Further Education level. Therefore, do not worry if you

are still undecided. We will help you develop that all-important sense of vision for your future.

Joining the Aspire Academy
If you have achieved top grades at GCSE (or international equivalent) level, you will be enrolled in the Aspire Academy automatically. However, many Aspire talks and activities are open to all students, regardless of GCSE (or international equivalent) grades. We will expect you to follow relevant Enrichment opportunities of your choice. We will also encourage you to become a Student Ambassador, which will help you develop your public speaking skills and confidence.

University applications
We aim to prepare you for the rigorous application, testing and interview processes of the most respected universities.

Aspire tutoring
In 2022 the majority of our Aspire students progressed

to Russell Group universities. We have collaborative projects with Oxford and Cambridge, and also the local universities of Southampton, Bournemouth, Reading and Winchester, to help you make a successful transition to Higher Education.

Importantly, you will be in a specialised tutor group to help you develop and consolidate your knowledge and skills, as well as grow both in confidence and as a person.

Oxbridge support
If you study STEM or humanities subjects and are aiming to progress to an Oxbridge college, we have dedicated Oxbridge tutor groups to help you make a successful application.

We also provide interactive workshops to help you develop your critical thinking skills, prepare you for selection interviews and extend your learning beyond the classroom.

Throughout the year we provide specialist support and guidance, including seminars run by representatives of Oxbridge colleges.

Leadership workshops
We offer a series of half-termly workshops led by the College's senior team, which are designed to develop your leadership potential. These are opportunities to challenge yourself and work in teams drawn from different subject areas.

Vets and Medics
This is an Enrichment programme for students who aspire to work in the medical or veterinary professions. Expert advice and guidance will be provided on how to make a successful application, and you will discuss and debate current issues in medicine and veterinary science.

Debating opportunities
You can join our Debating Society or take part in the Students' Union Student Parliament. Both options represent ideal opportunities for you to hone your skills in the discussion of contentious topics.

Growth mindset
We want to work with you to develop the mindset you need to reach your objectives. Indeed, we want to help you develop the resilience and confidence to enable you to be successful in your exams and interviews.

Brock Scholars programme
You will be asked to take part in a peer-assisted learning programme designed to help boost your grades.

STEP and AEA Maths support

We provide individual and small group support to students wishing to sit STEP, AEA and other special exams. Support will involve taught sessions in the lead-up to exams, as well as access to a range of practice materials and other resources on our e-learning website.

If you are studying Maths, you will be given access to a wide range of support materials through the Further Maths Support programme and Integral Maths website.

Extended Project Qualification (EPQ)

The EPQ gives you the opportunity to research an area of your choice beyond your A Level courses. It is equivalent to one AS Level (UCAS points) and can be studied in your second year.

You will develop your academic skills through the process of planning and refining your research to make a final presentation. Your project can be either a research project or an artefact such as a piece of music or a film script.

You will be taught and mentored in small groups. Every year students complete scientific and social science-based projects. Past projects have included: The impact of pesticides on bee populations; Is the NHS being privatised by stealth?; Existentialism in the work of Dostoevsky; Women in Victorian society.



Andy Sung from South Korea is now studying Aeronautical Engineering at Imperial College London

"I spent two years at Brock doing my A Levels. The College provides a very welcoming environment for international students and is also a fantastic institute in terms of education. Teachers are genuinely passionate about their jobs and support students regardless. The experience surely developed me into a better-rounded individual."

STEM ACADEMY



"Brock is the only FE college locally that offers Geology at A Level, which is a big reason why I decided to study here. Also, Britain is well-known for having excellent university programmes for aspiring geologists. Geohazards such as earthquakes and volcanic eruptions are my main interest, but I'm also interested in mineral formations. My teacher is incredible at helping me understand."

Idana Valeria Elías from Chile.
A Levels studied: Geology, Biology, Chemistry. FCSE Chinese.

At Brockenhurst College we have a history of strong results across the STEM subjects. If you want to gain added support for your STEM learning, then come and join our STEM Academy.

What are the advantages?

Our STEM Academy is designed to support students studying Science, Technology, Engineering and Maths (STEM), and promote high achievement.

What is the commitment?

As a member of the STEM Academy, you will have the opportunity to participate in STEM-related enrichments, attend STEM talks and events and go on STEM-related trips.

If you are considering a career in science, engineering, medicine, veterinary science, or any other STEM-related area, then this extra learning opportunity is definitely one for you.

How do I apply?

You will have the opportunity to apply at Enrolment.

Special activities

Being part of our STEM Academy means you will have the chance to participate in extra activities including competitions, trips and talks by visiting speakers.

STEM Awards

The STEM Awards ceremony highlights students' achievements in science, technology, engineering and maths-related subjects. This annual event is sponsored by our local industry partners: Hythe-based GEO Specialty Chemicals and Lymington-based Bridgeworks.

Here are some examples of recent opportunities:

- British Science Week at the College, featuring a range of visiting speakers.
- Community volunteer programme for medics and vets.
- Educational trips to Iceland, Switzerland (CERN) and elsewhere.
- Physics and Biology Challenges and Olympiads.
- Subject conferences and masterclasses.
- Support with special papers like BMAT, MAT and STEP.
- UK Senior Maths Challenge (individual and team) and Olympiad.
- University of Southampton Ambassadors programme.

Top students in each STEM subject will be presented with either Gold or Silver Awards for a variety of reasons. However, the common denominators will be that they have demonstrated dedication, commitment and hard work in their studies. Winners will also walk away with cash prizes.

The Greenwood Bursary

The Greenwood Bursary funds university tuition fees for a Brock student who has excelled in STEM subjects and faces financial hardship. This bursary funds three years of a full degree course for a student who has selected a degree programme in a STEM subject.

The Greenwood Bursary may only be awarded to one student a year. It was established in 2018 by retired Lyndhurst couple, John and Marion Greenwood, who together have backgrounds in both engineering and education.



"By focussing heavily on practical skills, this course has really played to my strengths. I learn best by doing, so completing hands-on work every day is preparing me well both physically and mentally for a future in show business. We get to do a lot of live performances in all sorts of styles, which has helped build my confidence. I'm aiming to secure a place at a leading drama school after college."

Laura Calazans from Brazil.
Studied: Performing Arts Level 3 Extended Diploma

PERFORMING ARTS & MUSIC ACADEMY

Our Performing Arts and Music Academy gives you even more opportunities to develop your talents in music, dance, acting and singing. You will also be able to improve your overall performance skills alongside likeminded people who will help you make the step up to professional or semi-professional level.

How do I apply?

You will have the opportunity to apply for membership of our Performing Arts and Music Academy at Enrolment.

Facilities

Our facilities include a 100-seat theatre, a Main Hall performance space, a recording studio, four sound studios, two sprung dance studios, three rehearsal studios, props and costume areas, two Mac suites, and two lighting and sound gantries.

Enrichments

As an Academy member we will expect you to participate in at least TWO relevant Enrichment opportunities.

These could include:

Dance Company through which you can audition to join our accomplished dance troupe and choreograph and perform a range of works.

Production through which you can audition to be in our college musical. Past productions have included *Guys and Dolls*, *Soho Cinders* and *The Tempest*.



Brock Studio Sessions through which you can play in bands and perform at lunchtime and evening gigs.

Instrumental/vocal lessons

We have many visiting tutors who come in to deliver one-to-one lessons. You can also improve your instrumental technique and take grades in your chosen instrument or voice at an additional cost.

Experience

You will have plenty of opportunities to gain additional performance experience through college productions. You can also choose to work for the College's Marketing department as a Student Ambassador, earning credits you can spend on campus. Both options will give you valuable material for your growing CV.

Trips

We run a series of performance-related trips designed to inspire you and help you learn from others. You will be expected to participate in at least two trips a year.

Trips include:

- Backstage tours of West End theatres and opera houses followed by viewings.
- New York, where you will watch musicals on Broadway and take part in performance workshops.
- Local theatres where you will see the latest plays, musicals, concerts and dance productions.

SPORTS ACADEMY

You can continue playing the sports you love and develop as an athlete by joining our Sports Academy, where you will benefit from regular coaching, training and competition.

Currently we run academies in basketball, football, golf, netball and rugby, enabling you to enjoy sport alongside your studies.

You will train twice a week and represent the College in county, regional and national events, giving you the constant thrill of hard-fought competition.

Importantly, all training and competing will be scheduled so it does not clash with your studies.

Basketball

Through our Basketball Academy you can develop your skills and general fitness under coaches who have experience of competing both nationally and internationally.

In the past our teams have won leagues and been cup semi-finalists. One member was even invited to join the prestigious Impact Basketball Academy in Las Vegas.

Football

UEFA-qualified coaches provide a first-class training environment for Football Academy members.

Our five teams compete across the Hampshire College Leagues, as well as in regional and national cup competitions.

Golf

Whether you already play golf competitively or have the talent and drive to start, you will definitely want to join our Golf Academy.

As a member you can benefit from contact with PGA-qualified coaches throughout the academic year, improving all aspects of your game ahead of competition.

Netball

Netball at Brock is all about developing ball skills, matchplay ability and fitness, as well as having fun.

Our Netball Academy gives you the chance to play in the Hampshire College League and participate in cup competitions both regionally and nationally.

Rugby

Our Rugby Academy has a fearsome reputation for playing high-tempo rugby with organisation, precision and commitment. Indeed, our training and gameplay will improve any player.

We compete in a range of league and cup competitions, which means you can test yourself against some of the best sides around.



Florencia Rodriguez from Chile, AFC Bournemouth Female Elite Player Programme, High School Experience

"Having the opportunity to be part of the team has allowed me to grow as a player and at the same time meet people who are so excited about football that every day I look forward to the practice time."

AFC Bournemouth Female Elite Player Programme

We work with AFC Bournemouth so women footballers can combine academic studies with a comprehensive football education programme.



The Female Elite Player Programme will allow you to access high-quality coaching, with a range of sessions available each day, plus regular Wednesday fixtures.

Meanwhile, your academic curriculum can be tailored to match your ambitions, with a range of A Levels and Vocational courses on offer.

HOMESTAY ACCOMMODATION

When you arrive in the UK, you will be welcomed into your new home and, importantly, be treated as a member of the family.

Homestay accommodation is available to all international students and is organised by the College's International office. You will live with a local host family and gain an authentic insight into British life. All our hosts are selected carefully and their homes are inspected regularly.

Homestay accommodation provides:

- A traditional, English-speaking home environment.
- A private, furnished room.
- Two meals a day and three meals a day during weekends and holidays.
- Internet access.
- Travel pass, where applicable.*
- Laundry opportunities once or twice a week.
- Proximity to the College based on a commute time of up to 45 minutes.
- Very few additional living costs.

Your Homestay host will give you advice about staying healthy and safe while you gradually become more independent. You will be able to call them at any time for support, plus there is a 24-hour College Helpline in case of emergencies. Your Homestay host can also provide reassurance about your progress to your parents.

*Your travel pass is not normally available until after your induction week.



"I got to live with the best host family that I clicked with instantly, and I enjoyed the overall experience much more by living in a Homestay. It benefited me both personally and socially, making me much more open and respectful."

Other benefits include perfecting my language skills and getting a taste of British culture. The main benefit of living in a Homestay is that you'll make friendships that may last forever."

David Ormandy from Slovakia.
A Levels and Vocational courses studied:
Psychology, Sociology, Performing Arts.



"I'm lucky because I'm staying with the greatest host family. They always prepare nice dinners and wonderful desserts. It has benefitted me both personally and socially. In addition, the English-speaking environment provides a valuable"

chance to have a better understanding of British culture. My experience has assured me that coming to England for my studies is right."

Betty Xu from China.
A Levels studied: Maths, Further Maths,
Economics, Sociology.



HIGH SCHOOL EXPERIENCE

The High School Experience is a flexible, short-stay learning experience through which you can choose to stay with the College for a term, two terms or a term and a half.*

Students usually choose three academic subjects from a wide variety of options, which will be supplemented by specialised English classes. International students undertaking the High School Experience will participate in lessons alongside British students completing their A Level studies, meaning they will benefit from fully immersing themselves in British culture. As a student you can also participate in various extra activities and benefit from the College's Enrichment programme.

All High School Experience students stay with our Homestay hosts, located in the area between Brockenhurst and Bournemouth. A private room, half-board over the week and full-board over the weekend, plus free days and a travel pass, will be provided for every student. An academic transcript with feedback from teachers and confirmation of studies will be provided at the end of this programme.

Visit our website www.brock.ac.uk/international for more details. *Ask us about the possibility of a shorter stay.

AGE: 16 – 19

COURSE DURATION:
One week – One year

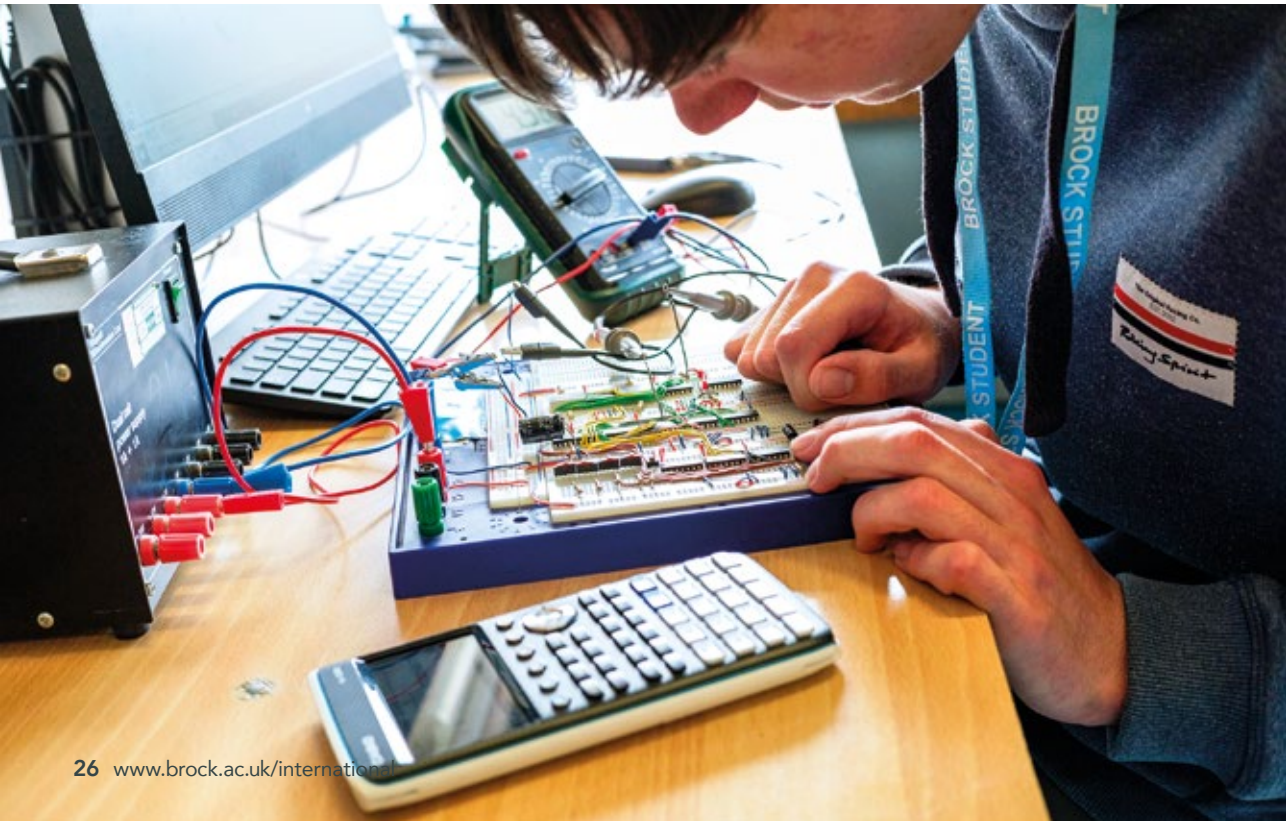
START DATE:
September 2024 or January 2025

HOURS PER WEEK: 15 – 20 hours

ENTRY REQUIREMENTS:
Entry is by interview. We normally expect:

- Good track record of academic study
- Good conversational level of English

QUALIFICATIONS GAINED:
Brockenhurst College Attendance Certificate



Tuition fees

| | |
|--|--------|
| AUTUMN TERM Sept 2024 – Dec 2024 | £5,000 |
| SEMESTER Sept 2024 – Feb 2025 Half Term Jan 2025 – May 2025 Half Term Feb 2025 – July 2025 | £6,250 |
| SPRING TERM Jan 2025 – Easter 2025 | £4,750 |
| SPRING & SUMMER TERM Jan 2025 – July 2025 | £7,250 |

Tuition fees and accommodation package

| | |
|--|---------|
| AUTUMN TERM Sept 2024 – Dec 2024 | £8,500 |
| SEMESTER Sept 2024 – Feb 2025 Half Term Jan 2025 – May 2025 Half Term Feb 2025 – July 2025 | £11,000 |
| SPRING TERM Jan 2025 – Easter 2025 | £7,500 |
| SPRING & SUMMER TERM Jan 2025 – July 2025 | £13,000 |

You may also join the High School Experience for a full academic year, or even a full two-year A Level programme, and come away with external qualifications. See pages 32-33 for more information on the full A Level programme.



SPRING, SUMMER AND WINTER SCHOOL COURSES

Our Spring, Summer and Winter School courses give you an authentic British cultural and study experience during your school break. You will participate in a range of classes, activities and trips to improve your English language skills over a period of one to four weeks.

We offer a range of options for students, from traditional summer and winter schools (English language plus cultural trips and activities) to full 'immersion' courses (studying in academic classes alongside UK students).

AGE: 12+ (depending on course)

COURSE DURATION: 1 – 4 weeks

START DATE:
Various start dates in Spring, Summer and Winter.

HOURS PER WEEK:
15 hours per week of English, plus activities or specialist classes depending on your course.

ENGLISH LANGUAGE REQUIREMENT:
A good conversational level of English.

QUALIFICATIONS GAINED:
Brockenhurst College Certificate.

TUITION FEE:
Fees vary depending on the programme, but will include full-board accommodation, daily transport and excursions. Contact us for a quotation.

"Brock offers a great environment to learn, have fun and make friends. Before joining Brock I wasn't sure about continuing my studies in England, but now I know that I am able to. All teachers were friendly and willing to help at any time."

Susie Yang from China.

SECONDARY COURSES

Our Secondary courses provide longer study options, enabling you to develop confidence in English and improve your study skills. These are high-quality academic and vocational courses, which aim to help you build a good foundation of knowledge before you progress to more advanced study. They will also assist you in making the right choices about Higher Education and your future career.



PRE-A LEVEL PLUS COURSE

Pre-A Level Plus is a six month, intensive A Level preparation course that comes with a guaranteed place to study A Levels if you perform well.

You will study a mixture of Mathematics, Sciences, Business and Psychology, supported by intensive English language classes, to help you develop a broad understanding of study in the UK. You will also have the chance to sample some Enrichment activities.

AGE: 16+

COURSE DURATION: Six months

START DATE: January 2025

HOURS PER WEEK: 25 hours

ACADEMIC REQUIREMENTS:
Completed Junior High School with a good level of attainment. We will require your past two years of academic reports.

ENGLISH LANGUAGE REQUIREMENT:
Good conversational level of English, with good written English.

ASSESSMENT METHOD:
Regular tests and teacher testimonials.

QUALIFICATIONS GAINED:
Brockenhurst College Pre-A Level Plus Certificate.

TUITION FEE: £8,500

PACKAGE FEE:
£13,750. Package includes all tuition, accommodation and travel.

"Brock has wonderful staff who are always very helpful. My teachers are always happy to answer my questions and help me."

Mike Zhang from China.
A Levels studied: Biology, Chemistry, Maths.



A LEVEL / A LEVEL EQUIVALENT COURSES

A Levels are internationally recognised advanced qualifications for university entry. To achieve a full A Level you will need to pass examinations at the end of your second year of study. Some subjects offer you the opportunity to achieve an AS Level certificate at the end of your first year.

If you have enjoyed your junior high school or secondary study (GCSE equivalent), A Levels will build on your existing knowledge and understanding. Three A Levels is a requirement for most universities in the UK and around the world, although you can take four.

Choose any combination from over 45 subjects:

- Animation
- Biology
- Business
- Chemistry
- Chinese
- Classical Civilisation
- Computer Science
- Criminology
- Dance
- Digital Music Production
- Drama and Theatre Studies
- Economics
- Electronics
- English Language
- English Language and Literature
- English Literature
- Enterprise and Entrepreneurship
- Environmental Science
- Fashion and Textiles
- Film Studies
- Fine Art
- French
- Geography
- Geology
- Graphics and Illustration
- History
- Information Technology
- Law
- Law (Applied)
- Mathematics
- Mathematics (Further)
- Mathematics (Core)
- Media Studies
- Medical Science
- Music
- Performing Arts
- Philosophy
- Photography
- Physics
- Politics
- Product Design
- Production Arts
- Psychology
- Sociology
- Spanish
- Sport Science

100%

overall pass rate for international students

70%

international progression to top 20[†] ranked UK universities

61%

A*–B grades for international students

You normally choose three subjects to study over two years. You may also choose to study your native language as an additional subject if it is available.

ESOL classes – English for Speakers of other Languages

In addition to your A Level subjects, you will receive complementary English language classes. These classes run alongside your other subjects to support you throughout the year.

In-session Enhancement English Language Course

If you need more support, or if you are aiming for a university with high English entry requirements, this course provides additional language and study skills tuition.

It will run alongside your A Level or Vocational course throughout the year (in addition to your English language classes) to give you increased language and study skills support.

The tuition fee is £3,000 per year.

After completing your A Levels you can study for a range of degrees at top universities in the UK and overseas.

- We have a 100% overall A Level pass rate among our international students.
- In 2023, 61% of our international students gained A*–B grades.
- In 2023, 80% of all our international students achieved A*–C grades across all subjects.

“Brock offers a wide range of classes so everybody can choose what they are interested in. To be able to choose subjects based on my interests and my future university studies is a big advantage. Every teacher cares about me and gives me advice. During my ESOL classes I learn a lot, which helps me academically.”

Hinano Tsutsui from Japan.
A Levels studied: Philosophy, Psychology.

AGE: 16+

COURSE DURATION:

Two years (three terms per year)

START DATE: September 2024

HOURS PER WEEK:

Approximately four-and-a-half hours per week for each A Level subject, plus an equal amount of self-study.

Three hours per week English Language (ESOL) support for all students until you achieve IELTS 6.5.

ACADEMIC REQUIREMENTS:

You should have completed at least one year of senior high or secondary school with a good level of attainment. We will require your past two years of academic reports.

ENGLISH LANGUAGE REQUIREMENT:

IELTS 5.0 overall with no band below 5.0 or equivalent UKVI-approved English Language certificate.

Students with a high academic performance but with an overall IELTS score of below 5.0 may be offered the opportunity to join one of our English support courses, which will allow them to meet our English entry requirements.

ASSESSMENT METHOD:

Students are assessed by GCE Advanced Level examinations. Some subjects require coursework assessments as well.

QUALIFICATIONS GAINED:

Typically three full A Levels.

TUITION FEE: £11,500 per academic year

FAST TRACK A LEVEL

The Fast Track A Level option is available to a limited number of gifted and highly motivated students who wish to complete A Levels in three or five terms.

This programme is designed for students who can demonstrate strong previous academic performance and have a high level of English.

You will be able to study a limited number of A Levels from the following key subjects:

- Mathematics
- Physics
- Chemistry
- Biology
- Economics
- Business

You will also benefit from English language classes that will fine-tune your skills to the level required by the best universities.



"As an international student living in a new place it is not easy and can be scary at times, but Brock provides a strong support system with teachers, counsellors and especially the

wonderful International department, who will be there for you. There are plenty of ways for your growth in chosen subjects to be achieved due to the equipment, studios, learning facilities and nice people. I think this place will help you open doors to a better future and support you and your hard work."

Yasmin Kandykbayeva from Kazakhstan.
A Levels studied: Fine Art, Sociology,
Media Studies.



AGE: 17+

COURSE DURATION: Three or five terms

START DATE:

September 2024 (three terms)
January 2025 (five terms)

HOURS PER WEEK:

Approximately nine hours per week for each A Level subject, plus an equal amount of self-study.

One and a half hours per week English language (ESOL) support for all students until you achieve IELTS 6.5.

ACADEMIC REQUIREMENTS:

You should be a high achiever in your chosen subject areas. You should have completed a minimum of two years of senior high school. We will require your past two years of academic reports.

ENGLISH LANGUAGE REQUIREMENT:

IELTS 5.5 overall with no band below 5.0 or equivalent UKVI-approved English Language certificate.

Students with a strong academic performance but with an overall IELTS score of below 5.5 may be offered the opportunity to join one of our English support courses, which will allow them to meet our English entry requirements.

ASSESSMENT METHOD:

Students are assessed by GCE Advanced Level examinations. Some subjects require coursework assessments as well.

QUALIFICATIONS GAINED:

Typically three full A Levels.

TUITION FEE: £17,500 (three terms)
£21,000 (five terms)

VOCATIONAL COURSES

An alternative to A Levels with a more practical focus. Vocational courses help you develop the knowledge and skills to work in a specific job or trade. They lead to internationally recognised qualifications and can open doors to employment or university.

If you have done well in your GCSE (or equivalent) studies and wish to begin a practical course, our two-year Vocational programme is designed to prepare you for the career you want.

Importantly, these courses respond to the specific needs of employers and enable you to progress to university. You will be taught to develop practical and theoretical skills, and will have the chance to complete a work placement. Also, you will be assessed mainly through assignments rather than exams.

We offer courses in the following subject areas:

- Art and Design
- Business
- Engineering
- Health and Social Care
- Information Technology
- Media
- Music
- Performing Arts
- Professional Photography
- Sport and Exercise Science
- Sport
- Travel and Tourism
- Uniformed Protective Services



"I am currently studying Level 3 Performing Arts. I am very happy with my programme. We do many different units during the year that are really interesting. My main focusses are dance, acting and singing. I think this course can fully prepare students for their future whether they decide to continue with their education or decide to find a job afterwards."

Ivana Andrejkova from Slovakia.
Vocational course studied: Performing Arts.



ESOL classes – English for Speakers of other Languages

As well as your main studies, you will receive complementary English language classes. These classes run alongside your other subjects to support you throughout the year.

In-session Enhancement English Language course

If you need more support, or if you are aiming for a university with strict English Language entry requirements, this course will provide additional language and study skills to enable you to meet your objectives. (see page 33 for more details).

By completing the two-year programme successfully, you will be awarded a Level 3 Extended Diploma (equivalent to three A Levels).

In 2023, students who completed Vocational courses entered professions such as hospitality management, social work and physiotherapy.



AGE: 16+

COURSE DURATION:

Two years (three terms per year)

START DATE: September 2024

HOURS PER WEEK:

Approximately 15 hours per week including all work placement visits.

Three hours per week English Language (ESOL) support until you achieve IELTS 6.5.

ACADEMIC REQUIREMENTS:

You should have completed at least one year of senior high or secondary school with a good level of attainment. We will require your past two years of academic reports.

ENGLISH LANGUAGE REQUIREMENT:

IELTS 5.0 overall with no band below 5.0 or equivalent UKVI-approved English Language certificate.

Students with a high academic performance but with an overall IELTS score of below 5.0 may be offered the opportunity to join one of our English support courses, which will allow them to meet our English entry requirements.

ASSESSMENT METHOD:

Students study real-life, work-based case studies and complete projects and assessments that contribute to achievement against a set of goals.

QUALIFICATIONS GAINED:

Level 3 Extended Diploma.

TUITION FEE: £11,500 per academic year

UNIVERSITY PREPARATION COURSES

Foundation Year courses are designed to provide you with detailed subject and language knowledge, and were especially created for international students.

Study skills coaching and advanced English language training will together ensure you achieve your full potential.

These courses offer you a supportive learning environment to aid your transition from college to university. Importantly, independent learning skills will be high on the agenda.

Choose from the following specialist pathways:

- International Foundation Year in Business and Finance
- International Foundation in Science and Engineering

At Brock we run Higher Education Fairs that attract representatives of over 50 universities. Here is a list of institutions that attended the last event:

- Aberystwyth University
- ACM (Academy of Contemporary Music)
- AECC University College
- Arts University Bournemouth
- Arts University Plymouth
- Bath Spa University
- BIMM University
- Bournemouth University
- Buckinghamshire New University
- Cardiff University
- Coventry University
- Falmouth University
- Heriot-Watt University
- Lancaster University
- Newcastle University
- Oxford Brookes University
- Royal Agricultural University
- Royal Holloway, University of London
- Royal Northern College of Music
- Royal Veterinary College, University of London
- Solent University
- Sparsholt University Centre
- University of Bath
- University of Birmingham
- University of Brighton
- University of Bristol
- University of Chichester
- University for the Creative Arts
- University of Derby
- University of Dundee
- University of East Anglia
- University of Essex
- University of Exeter
- University of Kent
- University of Law
- University of Lincoln
- University of Nottingham
- University of Plymouth
- University of Portsmouth
- University of Reading
- University of Sheffield
- University of South Wales
- University of Southampton
- University of Stirling
- University of Strathclyde
- University of Suffolk
- University of Surrey
- University of Sussex
- University of Warwick
- University of Winchester
- Wrexham Glyndŵr University



INTERNATIONAL FOUNDATION YEAR IN BUSINESS AND FINANCE

This business and finance course is specifically designed for international students whose first language is not English. Importantly, it will give you the academic support to prepare you for degree-level education.

As well as developing an understanding of key business and finance-related concepts, you will learn to apply this knowledge in a real-world context. Reading and analysing the business and financial news to broaden your subject knowledge will be a key learning component.

By the end of the course you will be able to do the following:

- Analyse current issues and trends based on contemporary theories and concepts.
- Apply concepts in both case-study and real-world business scenarios.
- Critically evaluate business strategies, objectives and techniques.
- Identify and utilise appropriate business and finance tools.
- Present balanced arguments and solutions to real-life scenarios.
- Demonstrate the required skills of academic reading, listening, speaking and writing.
- Choose from a selection of modules, each worth 40 credits. Your choice will be based on your academic background and your intended degree programme. You will need to gain a total of 140 credits to complete the course.

| COMPULSORY MODULE | CREDITS AND OUTLINE |
|--|---|
| Academic study skills | 20 credits. This consists of one hour of tuition per week and is divided into two modules. The aim is to extend your academic study skills through cultural studies. References to historical periods and characters often appear in academic texts. |
| CORE MODULES (you need to choose 120 credits) | CREDITS AND OUTLINE |
| Academic English for Foundation Students This module will be compulsory for all students with IELTS overall score below 6.0. | 40 credits. There will be five hours of tuition per week in listening, reading, speaking, writing and vocabulary in a range of academic areas. You will reflect on your progress and be involved in setting learning targets. |
| Introduction to business and management | 40 credits. The module covers the following units: business and enterprise, business finance, people in business, operations, marketing, internal and external change in a business context, and managing change. |
| Principles and applications of economics | 40 credits. This module covers the following units: fundamental principles in economics, microeconomics, macroeconomics, international economics and development economics. |
| Concepts of mathematics | 40 credits. The module covers the following units: foundations in algebra, number, geometry and trigonometry; building mathematical skills in algebra, number, geometry and trigonometry; applying mathematical skills in an investigation; practical skills in mathematics. |



Completion of this course guarantees you a place at the University of Reading, home of the internationally-renowned Henley Business School.



Leavers may progress to Kingston Business School, which is one of the largest business schools in the UK.



Graduates may now progress to any degree course at the Faculty of Business, Law and Art at the University of Southampton.



A wide range of degrees at Bournemouth University are available to our International Foundation Year students.



AGE: 17+

COURSE DURATION: One year (three terms)

START DATE: September 2024

HOURS PER WEEK:
Approximately 20 hours per week of lectures and seminars.

Approximately 25 hours per week guided independent study.

ACADEMIC REQUIREMENTS:
You should have completed two or three years of senior high or senior secondary school with a high level of attainment in related subjects.

ENGLISH LANGUAGE REQUIREMENT:
IELTS 5.0 overall with no band below 5.0 or equivalent UKVI-approved English Language Certificate.

Students with a strong academic performance but with an overall IELTS score of below 5.0 may be offered the opportunity to join one of our English support courses, which will allow them to meet our English entry requirements.

ASSESSMENT METHOD:
You will be assessed through a mixture of regular coursework and assessments both during and at the end of each module.

QUALIFICATIONS GAINED:
Graduation Diploma with direct progression to university partners.

TUITION FEE: £15,000

INTERNATIONAL FOUNDATION YEAR IN SCIENCE AND ENGINEERING

You can develop your understanding of science and engineering concepts and prepare for university by studying this course, which is specifically designed for international students whose first language is not English.

You will practise a range of transferable skills, learn how to apply these skills, and improve your abilities in reading, listening, speaking and writing in English.

You will choose from a selection of modules, which are each worth 40 credits. Your choice will be based on your academic background and your intended degree programme. You will need to gain a total of 140 credits to complete the course.

| COMPULSORY MODULE | CREDITS AND OUTLINE |
|---|---|
| Academic study skills | 20 credits. This consists of one hour of tuition per week and is divided into two modules. The aim is to extend your academic study skills through cultural studies. References to historical periods and characters often appear in academic texts. |
| CORE MODULES (you need to choose 120 credits) | CREDITS AND OUTLINE |
| Academic English for Foundation Students This module will be compulsory for all students with IELTS overall score below 6.0. | 40 credits. There will be five hours of tuition per week in listening, reading, speaking, writing and vocabulary in a range of academic areas. You will reflect on your progress and be involved in setting learning targets. |
| Biology | 40 credits. The module covers the following units: cell and molecular biology; biochemistry; biological research methodology; practical skills in biology, energy flow, control, co-ordination; reproduction and genetics. |
| Chemistry | 40 credits. This module covers the following units: atomic structure, bonding and the periodic table; fundamental principles of physical chemistry; practical investigations; investigative chemistry; organic chemistry; chemical applications. |
| Concepts of mathematics | 40 credits. The module covers the following units: foundations in algebra, number; building mathematical skills in algebra, number; applying mathematical skills in an investigation; practical skills in mathematics. |
| Physics | 40 credits. This module covers the following units: measurements and their errors; materials; mechanics; waves; electricity; particles and radiation (quantum phenomena); momentum, circular motion and gravitation; magnetic fields and induction; nuclear physics. |



Completion of the course guarantees you a place at the University of Reading.



Leavers may progress to Kingston University in London.



Graduates may now progress to any degree course at the University of Southampton.



A wide range of degrees at Bournemouth University are available to our International Foundation Year students.



AGE: 17+

COURSE DURATION: One year (three terms)

START DATE: September 2024

HOURS PER WEEK:
Approximately 20 hours per week of lectures and seminars.

Approximately 25 hours per week guided independent study.

ACADEMIC REQUIREMENTS:
You should have completed two or three years of senior high or senior secondary school with a high level of attainment in subject related subjects.

ENGLISH LANGUAGE REQUIREMENT:
IELTS 5.0 overall with no band below 5.0 or equivalent UKVI-approved English Language certificate.

Students with a strong academic performance but with an overall IELTS score of below 5.0 may be offered the opportunity to join one of our English support courses, which will allow them to meet our English entry requirements.

ASSESSMENT METHOD:
You will be assessed through a mixture of regular coursework and assessments both during and at the end of each module.

QUALIFICATIONS GAINED:
Graduation Diploma with direct progression to university partners.

TUITION FEE: £15,000

APPLICATION PROCESS

We accept applications from all over the world, and our International team is here to offer you help and guidance every step of the way.

- TO APPLY:**
- Complete our International application form.
 - Supply your most recent two years of academic reports.
 - Provide a copy of your passport and birth certificate.

PROCESS:

Once we have received the above documents, we will invite you to a video-based interview, which normally takes about 20 minutes. We will ask you about your academic and career ambitions, your course choices, your interests and hobbies, and discuss your Homestay preferences (if applicable).

We will then normally be in a position to give you a conditional offer letter. This letter may contain academic and English language requirements, which you must demonstrate before we can make your offer unconditional.

We will also require payment of a deposit. This sum will be specified in your conditional offer letter.

VISAS:

Students from overseas will typically join us after obtaining a study visa. The main types of visa, with a brief explanation, are listed below:

| SHORT-TERM STUDENT VISA | STUDENT ROUTE VISA |
|---|--|
| <p>This type of visa is normally required if you do not have British nationality and are studying a course lasting up to six months.</p> <p>There is no requirement to produce an English language certificate for this type of visa, although you must still satisfy our internal assessment requirements.</p> | <p>This type of visa will be appropriate for you if you plan to join from overseas, do not have a British passport and will be studying a course lasting more than six months (typically on a one or two year course).</p> <p>You will need to supply a valid, UKVI-approved, English language certificate. Our English language requirements can be found on the individual course pages of this brochure.</p> <p>We have a professional visa team to help you through the process.</p> |

PRE-ARRIVAL: We will send you some paperwork to complete once we have confirmed your place and will allocate you a suitable Homestay placement.

We offer a complimentary meet-and-greet airport service from Heathrow airport in late August/early-September.

ENROLMENT: We have several days of induction activities during the first week of September, which will fully prepare you for your studies at Brock. You will also get to meet and make friends with other international students during this time.

FEES, SCHOLARSHIPS AND VISAS

- Fees**
- Tuition fees quoted in this prospectus include:
- A full-time programme of study.
 - All academic and personal support, including an International Tutorial programme and Student Support Manager.
 - Examination entry (including resits).
 - English language classes.
 - College clubs and society membership.
 - Aspire programme for high-achieving students.
 - London Heathrow airport pick-up service on specified dates.
 - Dedicated Higher Education guidance and specialist Oxford/Cambridge application support.

Please note: additional course costs apply to cover the cost of resources (£50-£80 per course), trips and sporting equipment. All students will be required to pay a non-refundable administration fee of £150 for each academic year.

Homestay accommodation fees

In 2024/25 a variety of homestay accommodation options will be offered, ranging from £7,800 to £8,800.

The College will charge a supplementary fee to cover certain circumstances as follows: special diet (e.g. gluten free) £25 per week, private foster care £50 per week.

Please visit www.brock.ac.uk/homestay for more information.

| ZONES | FEE | *Please note that travel passes may not be available for your first few days at college. You will need to fund your own travel in the meantime. |
|--------|---------|---|
| Zone A | £8,800 | |
| Zone B | £8,400* | |
| Zone C | £8,000* | |
| Zone D | £7,800* | |

Independent support fee

Any students not living in accommodation arranged by us are subject to an independent support fee of £500 to cover administration expenses.

Insurance

Please note that our fees do not include any travel/medical insurance. We would encourage you to make your own arrangements for this prior to arrival.

Scholarships

We are pleased to be able to offer a range of International Scholarships. For further information please visit www.brock.ac.uk/scholarships

Visas and immigration advice

As a Sponsor (formerly Tier 4 Sponsor) we are licensed to welcome international students wishing to study in Britain. It is very important you have the correct visa to live and study in the UK. The Government changes its regulations periodically and you must ensure that you are familiar with the terms of your visa. You will be supported throughout the application process by our dedicated immigration specialist.

For further information, visit: www.gov.uk/government/organisations/uk-visas-and-immigration and www.brock.ac.uk/international

International Student Support Fee for 2024/25

We will apply the following charge to any student joining the College from overseas that qualifies for a fee waiver. This may include British National Overseas students or British students non-resident in the UK for more than three years. If you fall into one of these categories and are also over the age of 19 at the beginning of your course, further fees may apply. Please contact us directly to assess your circumstances.

Fee: £5,500 per year.

We have used our best efforts to ensure that all the information provided in this prospectus is accurate at the time of publication. Some changes to our course provision may need to take place from time to time. Meanwhile, our website will be updated to reflect any updates or amendments whenever possible. For more information please visit www.brock.ac.uk

CONTACT US

We have a dedicated International team to help you through all stages of your application. Team members will fully prepare you for your arrival in the UK and we also provide all the support you need.

To find out more about the staff who specialise in international education, please visit:
www.brock.ac.uk/international/team

You may also contact your local agent for further information about studying with us.

Brockenhurst College
Lyndhurst Road, Brockenhurst, Hampshire, SO42 7ZE

T: +44 (0)1590 625325
T: +44 (0)1590 625555
E: international@brock.ac.uk
www.brock.ac.uk/international

